



Gfi Switzerland

Zurich, Oct 2019

Gfi Group



MORE THAN
19 500
EMPLOYEES



21
COUNTRIES

FRANCE
BELGIUM
SPAIN
PORTUGAL
MEXICO
LUXEMBOURG
POLAND

MOROCCO
ROMANIA
SWITZERLAND
BRAZIL
TUNISIA
COLOMBIA
IVORY COAST

PERU
USA
ANGOLA
PANAMA
UAE
SINGAPORE
ENGLAND

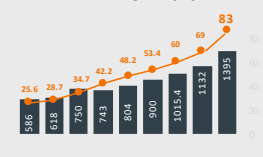


5
VALUES

AMBITION
INNOVATION
COMMITMENT
TEAM SPIRIT
SOCIAL RESPONSIBILITY

€1,395
million euros

REVENUE 2018



21 SERVICE
CENTERS

IN FRANCE

- LILLE
- LYON
- MEUDON
- NANTES
- TOULOUSE

INTERNATIONAL

- APAC (Macau)
- BRAZIL (São Paulo)
- COLOMBIA (Bogota)
- INDIA (Pune)
- MOROCCO (Casablanca)
- POLAND (Warsaw-Poznan-Lublin)
- PORTUGAL (Lisbon-Covilha-Bragança)
- ROMANIA (Bucarest-Constanza)
- SPAIN (Alicante-Zamudio)
- TUNISIA (Tunis)



PARTNERSHIP

Gfi is a major partner
of Paris Saint-Germain
Handball

6

ACTIVITIES

- CONSULTING
- APPLICATION & INFRASTRUCTURE SERVICES
- SYSTEM INTEGRATION (Business Solutions, ERP, CRM, PLM...)
- OUTSOURCING
- VALUE ADDED RESELLING
- SOFTWARE

BUSINESS
SOLUTIONS

- HEALTHCARE-SOCIAL
- INSURANCE
- PUBLIC SECTOR
- RETAIL
- TELECOM

GROUP ALLIANCES

- SAP, Microsoft, Oracle, Salesforce
- AWS, IBM, Sage, HRAccess
- PTC, Siemens, Dassault



6

BUSINESS
SECTORS

- FINANCIAL SERVICES
- INDUSTRY-AEROSPACE-TRANSPORT
- PUBLIC SECTOR
- TELECOM-MEDIA
- ENERGY-UTILITIES-CHEMICALS
- RETAIL-SERVICES

5

INNOVATION CENTERS

PARIS, NANTES, LYON,
GAND, LISBON
Madrid-Casablanca-Warsaw by 2020

8

GROUP
PRACTICES

At a glance

> Who are we?

- > The French Gfi Group is a well established large IT Services provider in various industries throughout Europe with 19,500 employees in 21 countries. Gfi Switzerland is the Zurich based OSS competence centre with 30 specialists and near-shore branches in Austria, Germany, Poland and UK. We are active on the market as a system integrator for 15 years.

> What do we do?

- > We offer software solutions for operation-supporting partial or complete E2E systems. With using partner products our highly skilled OSS experts can design and build solutions which are integrated into existing system landscapes and adapted to customer requirements. We have many years of experience in these areas:
 - > Network infrastructure and service monitoring
 - > Inventory and documentation of telecommunications networks
 - > Automated configuration and activation of customer services

> What makes us unique?

- > Our solutions reduce your operational costs and minimize your risks through automation.
- > We are working in a international organization and smart cooperation with near-shore teams.

Your Swiss Partner for E2E Solution Integration

› Solution Integration

- › Fault Management
- › Data Management
- › Performance Management
- › Resource Discovery & Inventory
- › Config & Change Management
- › Infrastructure & Service Management

› Professional Services

- › Business & Technical Consulting
- › Project Management
- › Software / System Integration
- › Full stack SW Development
- › Quality Testing
- › Operations, Maintenance & Support
- › Legacy systems operations

Our Partners

OSS Delivery CH



Gfi Telco sector



Software-Vendors and Products

- › Infosim
 - › StableNet

- › IBM
 - › Tivoli Netcool Suite
 - › Tivoli Network Manager IP (ITNM)
 - › Internet Service Monitor (ITCAM for ISM)
 - › Tivoli Monitoring (ITM)
 - › Tivoli Common Reporting (TCR)

- › NETadmin
 - › Netadmin

- › FNT
 - › Command
 - › ProcessEngine
 - › StagingArea
 - › ServicePlanet

Adrian Birrer

Senior Sales Manager

adrian.birrer@gfi.ch

IMPAQ AG
Friesenbergstrasse 75
CH-8055 Zürich
+41 79 797 80 30

Urs Amgwerd

Head of OSS Delivery

urs.amgwerd@gfi.ch

IMPAQ AG
Friesenbergstrasse 75
CH-8055 Zürich
+41 79 233 99 19

Roger Roth

Head of OSS Practice

roger.roth@gfi.ch

IMPAQ AG
Friesenbergstrasse 75
CH-8055 Zürich
+41 78 833 50 52



FRANCE | ESPAGNE | PORTUGAL | BELGIQUE | SUISSE | LUXEMBOURG |
ANGLETERRE | POLOGNE | ROUMANIE | MAROC | CÔTE D'IVOIRE |
ANGOLA | USA | MEXIQUE | COLOMBIE | BRÉSIL

gfi.world





Herzlich Willkommen

zur

8th Swiss Service & Infrastructure Management User Conference

29. Oktober 2019



controlware

FNT



LINKIN
added value consulting

NXE

Herzlich Willkommen

> VERANSTALTER



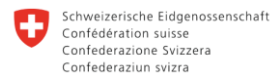
> PARTNER

FNT



NXE

> GÄSTE



Flughafen Zürich



Sunrise



NOKIA



ngworx.ag



hostettler group





Adrian Birrer

Sales Manager



Agenda

- 15h00** Begrüssung und Vorstellung - Gfi
- 15h30** Matthias Roth – FNT
«ServiceEngine - Mit Automation zur Service Excellence»
- 16h00** Dr. Stefan Köhler – Infosim
«Unified Next-Generation Network & Services Management StableNet®»
- 16h30** PAUSE
- 17h00** Roland Kaiser – Controlware
«Von Netzwerk-Management zu Netzwerk-Analytics»
- 17h30** Martin Kägi – HWZ
«Typische Herausforderungen bei der Einführung von agilen Methoden»
- 18h00** Q&A, Summary
- 18h15** Apéro riche, Networking & Gedankenaustausch



Dr. Sven Wolter

Country Manager
Switzerland

A stack of several blue spheres, each featuring the gfi logo and the tagline 'NEW CHALLENGES, NEW IDEAS'. The spheres are arranged in a way that they appear to be stacked on top of each other, with some in the foreground and others in the background. The background is dark with some blurred light spots.

gfi
NEW CHALLENGES,
NEW IDEAS

*«Ein starkes, lokales Team
in einer internationalen Organisation»*

*«Ihr Schweizer Partner für E2E Solution
Integration im Infrastruktur und Service
Management Bereich»*



Urs Amgwerd

Head of OSS Delivery

*«Wir verfügen über 40+
OSS Experten in CH, AT,
UK & PL»*

*«Kompetenz-
zentrum in
Zürich»*

*«Wir bieten:
Solution
Integration &
Professional
Services»*





Roger Roth

Head of OSS Practice

*«Wir werden grösster
und erfolgreichster OSS
Solution Provider im
DACH Umfeld.»*

*«Zusammen mit
unseren Partnern
bieten wir innova-
tive und nach-
haltige Gesamt-
lösungen an.»*



Bernhard Läser

OSS Projektleiter
Schweizer Armee



«ServiceEngine - Mit Automation zur Service Excellence»

Referate

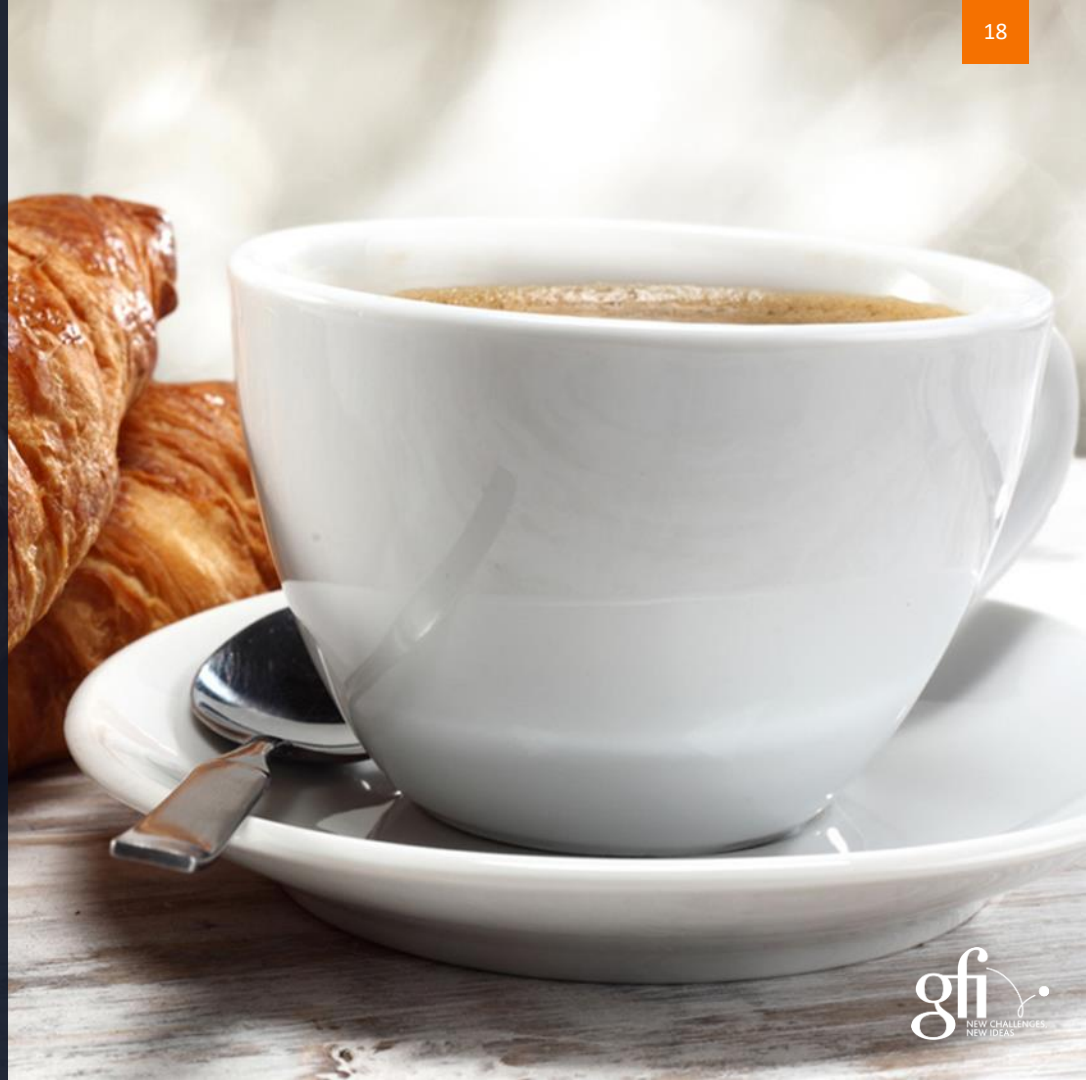
Dr. Stefan Köhler – Infosim



«Unified Next-Generation Network & Services Management StableNet®»

Pause

16:30 – 17:00



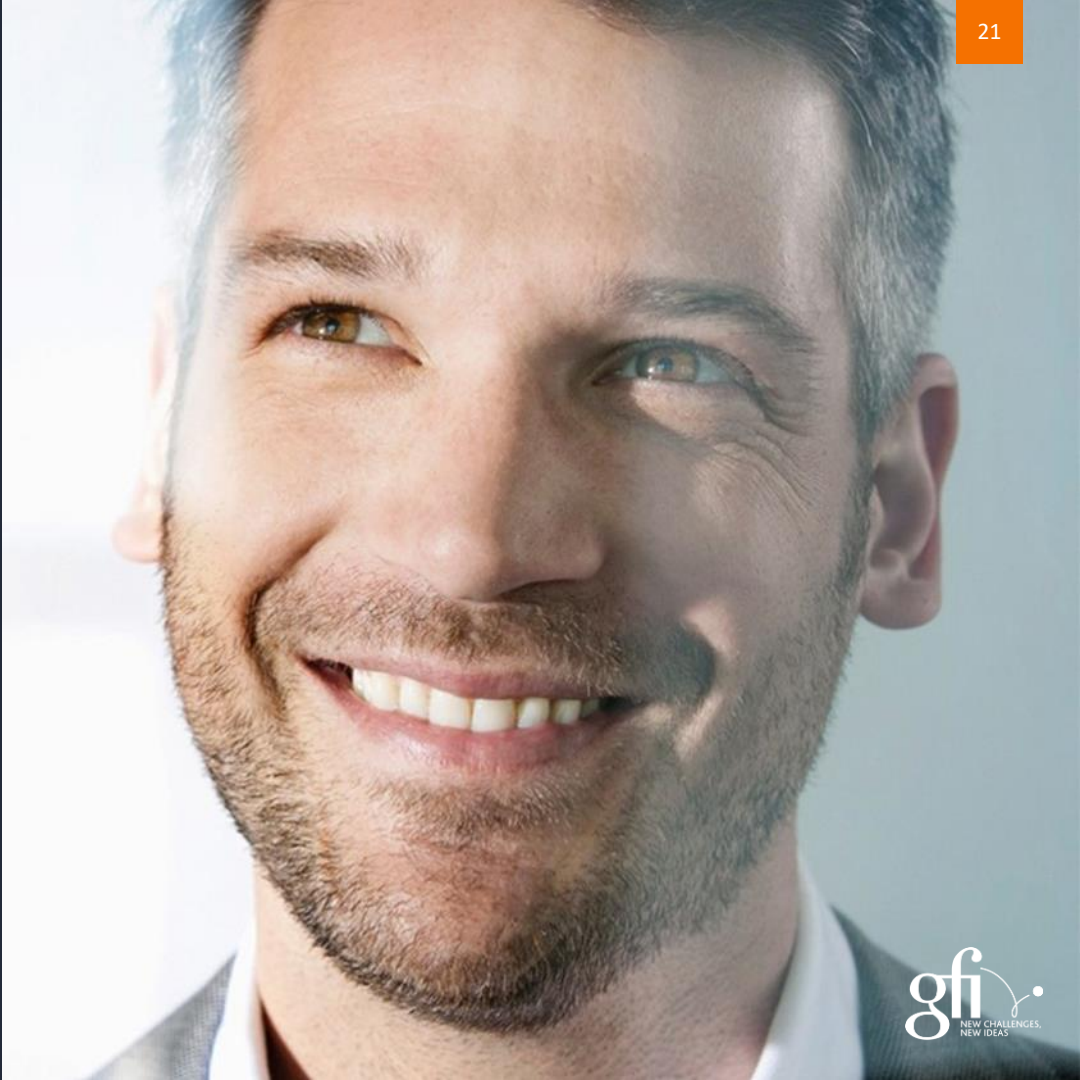
«Von Netzwerk-Management zu Netzwerk-Analytics»

Referate

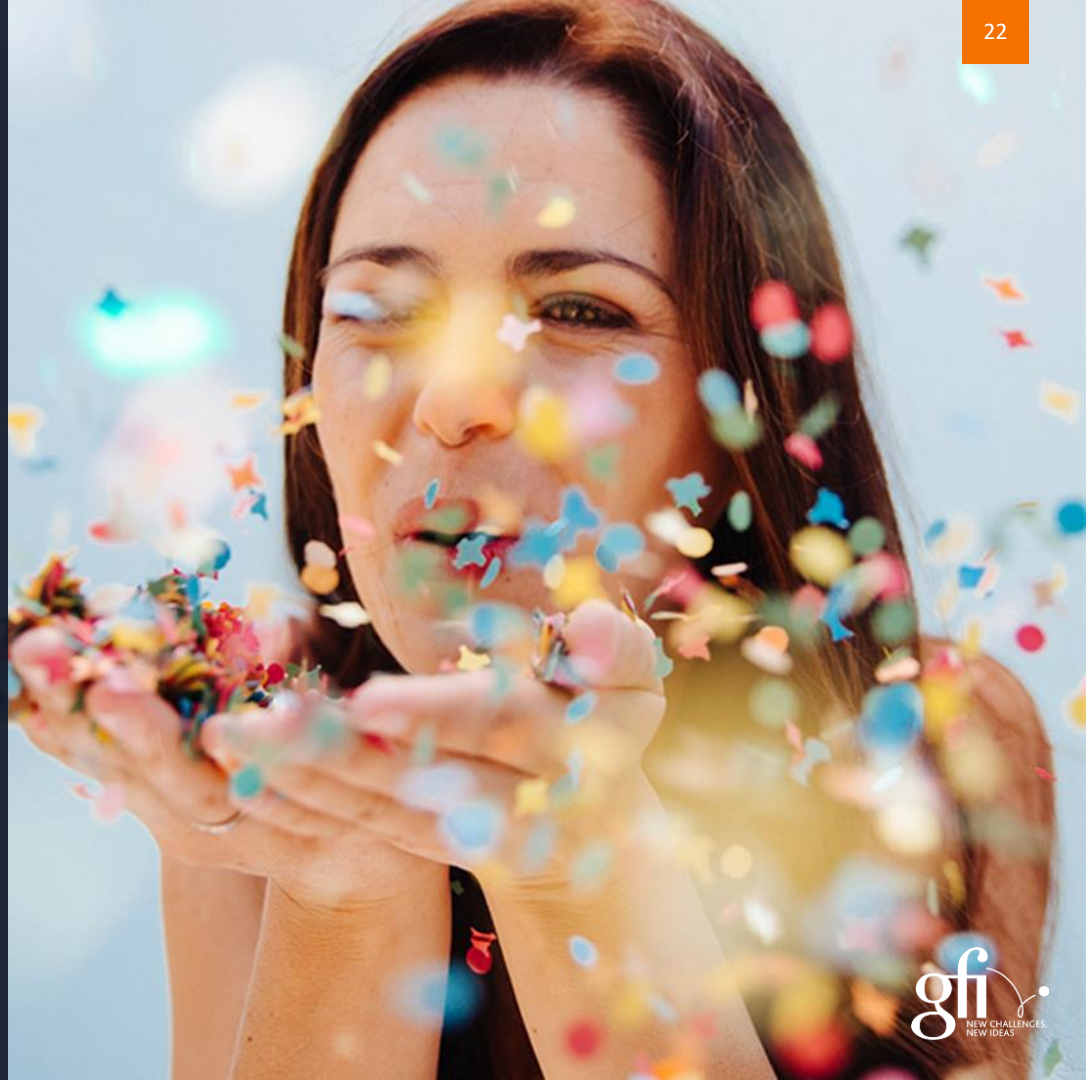
Martin Kägi – Hochschule für Wirtschaft Zürich (HWZ)

«Typische Herausforderungen bei der Einführung von agilen Methoden»

***Q&A,
Summary,
Feedback-
formular***



*Apéro riche,
Networking
&
Gedanken-
austausch*





**Vielen Dank für Ihre Teilnahme
und
auf Wiedersehen**



controlware

FNT



LINKIN
added value consulting

NXE